

PANTHER ENGLISH LANGUAGE ARTS

MRS. AGUALLO



COURSE DESCRIPTION

English Language Arts (ELA) is a literature-based writing course. Students will also learn to review and critique writing to improve revising and editing skills. Evidence based writing will be a focus during the year, as the NSCAS ELA test requires that students are able to explain their thinking using evidence from a passage that has been read closely.

GRADING POLICY

Daily Work: (30%)

- Welcome activities
- various practice assignments

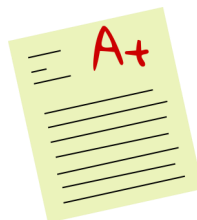
Assessment Grade: (70%)

- various checks for understanding throughout the grading period
- one culminating assignment per quarter

Late Work and Redo's:

8th Grade:

1. Daily work assignments and assessments are considered late if submitted after the teacher's established due date.
 2. The highest grade a student may earn on a daily work assignment submitted after the teacher's established due date will be a 50%.
 3. The highest grade a student may earn on a project-based assessment submitted after the teacher's established due date will be 70%.
 4. Daily work assignments received one week after the teacher's established due date will not be accepted. (BMS Handbook p. 19)
- Students are encouraged to redo any assignment or assessment that is unsatisfactory .
 - Redo's will be checked as time allows each day.



CONTACT INFORMATION:

- 635-6270 (8:43-9:33)
to leave a message
- aaguallo@sbps.net
- Remind

Grading Scale:

- 90-100=A
- 80-89=B
- 70-79=C
- 60-69=D
- 59 and below=F (BMS Handbook p. 16)

INSIDE THIS ISSUE:

TARDY POLICY 2

FIDGETS & GUM 2

WAYS TO STAY CONNECTED 2

- REMIND
- GOOGLE CLASSROOM
- INFINITE CAMPUS
- SBPS.NET

SUPPLIES

-pencil, paper, pen (blue or black), and Chromebook





TARDY POLICY

- 1st Tardy– 10 minutes after school with teacher
 - 2nd Tardy– 10 minutes after school with teacher
 - 3rd Tardy– 10 minutes after school with teacher plus a phone call home
 - 4th Tardy– Office Referral
- Tardies start over each quarter.
- If a student fails to show, he or she will move down a step on the matrix.

If a student is later than 15 minutes to any class, he or she will be marked absent/ truant. I will comment with the time the student entered class.

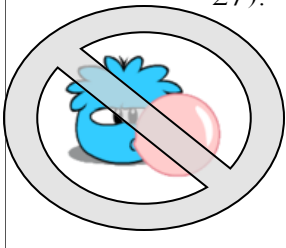
This will still be considered a tardy requiring the student to stay after school or receive an office referral according to the matrix. (BMS Handbook p. 13)

FIDGETS

Fidgets of any kind from home will not be allowed in my classroom. I will provide this accommodation as needed.

If a student brings one in, I will give him or her the choice to either put it in his or her locker or keep it on my desk until the end of the period. (BMS Handbook p. 27).

REMEMBER, GUM IS NOT ALLOWED AT BMS. (BMS HANDBOOK P. 27).

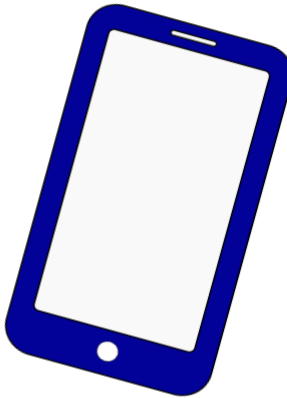


WAYS TO STAY CONNECTED

REMIND

Get information for Bluffs Middle School right on your phone—not on handouts. Pick a way to receive messages for ELA:

- If you have a smartphone, get push notifications.



-If you don't have a smartphone, you can still get text notifications.



-Don't have a mobile phone? You can receive email notifications.



GOOGLE CLASSROOM

As you know, we have an increased ability to use technology in the classroom. Students can access each day's assignments on Google Classroom from anywhere whether we used the Chrome Books or not that day. This will help with absences, and forgotten homework.



INFINITE CAMPUS

Grades are updated regularly so that students and parents have the most up-to-date information. If you are new to Infinite Campus, usernames and passwords may be obtained at the front office.

SBPS WEBSITE

Please look for my classroom on sbps.net. Choose Bluffs Middle School under the "Schools" tab, then choose Mrs. Aguallo-8th Panther ELA under the "Classrooms" tab. There are links to helpful information for you there.